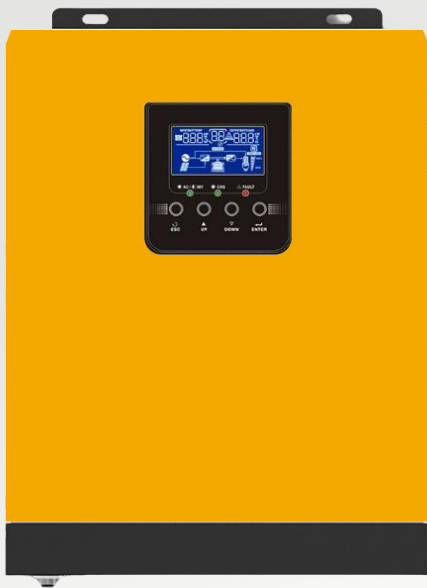


# Off Grid Solar Inverter

## High Frequency **SX-HEP SERIES**

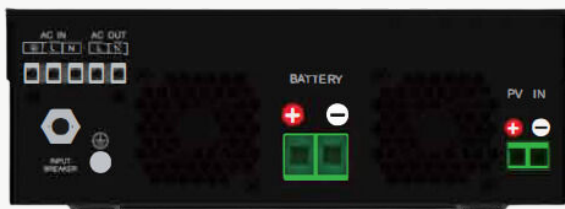


- **1.2KW/2.4KW**
- **220V**
- **12V/24V**

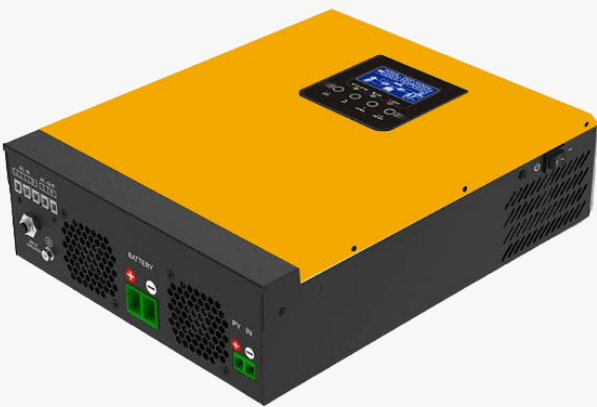
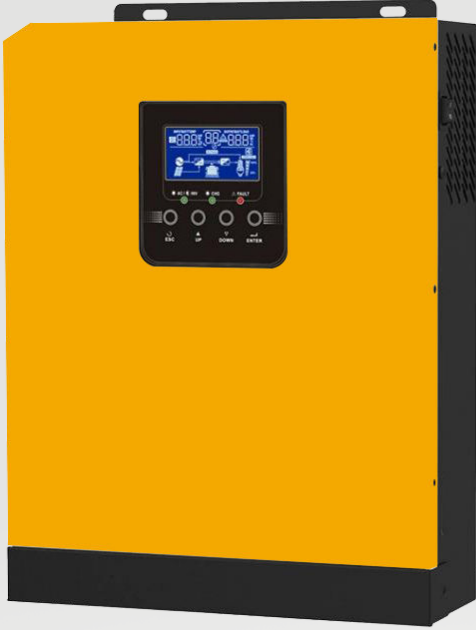
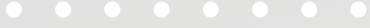
SX-HEP Series is a combination of high frequency inverter, AC charger and MPPT solar controller

### Features :

- Pure sine wave inverter
- Built-in PWM solar charge controller
- Selectable input voltage range for home use
- Selectable charging current based on applications
- Configurable AC/Solar input priority via LCD setting
- Compatible to mains voltage or generator power
- Auto restart while AC is recovering
- Overload and short circuit protection
- Smart battery charger design for optimized battery performance



# More Image



# Application

## Designed for Areas with:

Unstable grid power, need backup power .

**Main concern is sustainable power supply .**



Ground-mounted solar power system

## Designed for Areas with :

Stable grid power, but electricity price is expensive .

**Main concern is reducing electricity bills.**



Rooftop system on residential buildings

## OFF-GRID Solar System



Monitor Display



Phone APP



4G/Wifi dongle



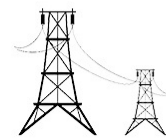
Generator Auto-start signal

Dry Contact

OFF-GRID Inverter Charger



State Grid AC IN



Breaker

AC

Solar panel PV IN



Combiner Box

DC



House Distribution Box

AC



Load

DC



Battery

# Data sheet

MODEL	HEP 1.5K-12	HEP 1.5K-24	HEP 3K-24
Rated Power	1500VA/1200W	1500VA/1200W	3000VA/2400W
<b>INPUT</b>			
Voltage	230VAC		
Selectable Voltage Range	170-280VAC(for personal computers) 90-280VAC(for home appliances)		
Frequency Range	50Hz/60Hz (Auto sensing)		
<b>OUTPUT</b>			
AC Voltage Regulation (Batt.Mode)	230VAC±5%		
Surge power	3000VA	3000VA	6000VA
Efficiency(Peak)	90%	93%	93%
Transfer Time	10ms (for personal computers) 20ms (for home appliances)		
Wave form	Pure Sine Wave		
<b>BATTERY</b>			
Battery Voltage	12VDC	24VDC	24VDC
Floating Charge Voltage	13.5VDC	27VDC	27VDC
Overcharge Protection	15.0VDC	30VDC	30VDC
<b>SOLAR CHARGER &amp; AC CHARGER</b>			
Maximum PV Array Open Circuit Voltage	55VDC	80VDC	80VDC
PV Range @ Operating Voltage	12-20VDC	30-40VDC	30-40VDC
Maximum Solar Charging Current	50A	50A	50A
Maximum AC Charging Current	10A/20A	20A/30A	20A/30A
Maximum Charging Current (Utility Charging+Solar Charging)	70A	80A	80A
Standby Power Consumption	2W	2W	2W
<b>PHYSICAL</b>			
Dimension.D*W*H(mm)	305*272*100mm		
Net Weight (kgs)	5.2kg		
<b>OPERATING ENVIRONMENT</b>			
Humidity	5% to 95% Relative Humidity(Non-condensing)		
Operating Temperature	0°C to 55°C		
Storage Temperature	-15°C to 60°C		