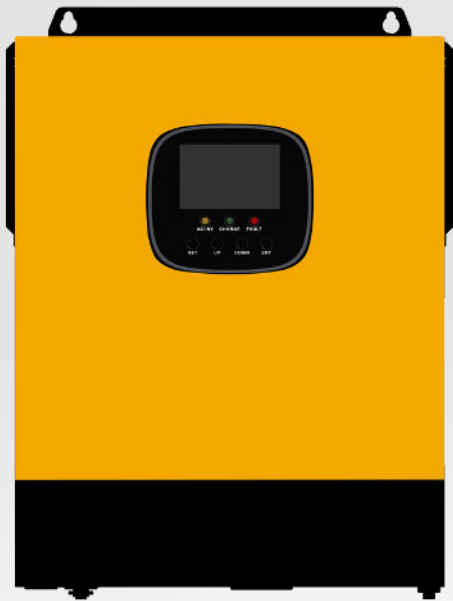


Off Grid Solar Inverter

High Frequency **SX-HSI 3000U SERIES**



- **3KW**
- **110V**
- **24V**

SX-HSI 3000U Series is a combination of high frequency inverter, AC charger and MPPT solar controller

Features :

- Advanced MPPT with up to 99.9% efficiency
- Multiple charge and discharge modes are available
- 360 degrees of security from hardware to software
- Multiple safety approvals available
- Support for many types of batteries
- Supports Li-ion battery BMS communication
- Outputs high-quality pure sine wave AC power
- Reliable output for long periods at rated power
- Industrial design with a modern aesthetic look
- Easy to install and simple to use
- Exclusive Li-ion battery BMS dual activation
- Support for remote monitoring of operating



More Image



Application

Designed for Areas with:

Unstable grid power, need backup power .

Main concern is sustainable power supply .



Ground-mounted solar power system

Designed for Areas with :

Stable grid power, but electricity price is expensive .

Main concern is reducing electricity bills.



Rooftop system on residential buildings

OFF-GRID Solar System



Monitor Display



Phone APP



4G/Wifi dongle



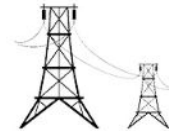
Generator Auto-start signal

Dry Contact

OFF-GRID Inverter Charger



State Grid AC IN



Breaker

AC

Solar panel PV IN



Combiner Box

DC



House Distribution Box

AC

AC



Load

DC



Battery

Data sheet

MODEL	HSI 3000U	Can Be Set
INVERTER OUTPUT		
Rated Output Power	3,000W	
Max.Peak Power	6,000VA	
Rated Output Voltage	120Vac (L/N/PE Single-phase)	✓
Load Capacity of Motors	2HP	
Rated AC Frequency	50Hz/60Hz	✓
Waveform	Pure Sine Wave	
Switch Time	10ms (typical)	
BATTERY		
Battery Type	Li-ion/Lead-Acid/User Defined	✓
Rated Battery Voltage	24Vdc	
Voltage Range	20~33Vdc	✓
Max.MPPT Charging Current	60A	✓
Max.Mains/Generator Charging Current	40A	✓
Max.Hybrid Charging Current	100A	✓
PV INPUT		
Num. of MPPT Trackers	1	
Max.PV Array Power	1,400W	
Max.Input Current	40A	
Max.Voltage of Open Circuit	108Vdc	
MPPT Voltage Range	30~85Vdc	
MAINS/GENERATOR INPUT		
Input Voltage Range	90~140Vac	✓
Frequency Range	50/60Hz	
Bypass Overload Current	40A	
EFFICIENCY		
MPPT Tracking Efficiency	99.9%	
Max. Battery Inverter Efficiency	92%	
GENERAL		
Dimension	378*280*103mm (1.24*0.92*0.34ft)	
Weight	6.8kg (14.99lb)	
Protection Degree	IP20, only indoor	
Operating Temperature Range	-15°C~55°C (5°F~131°F)	
Noise	≤60dB	
Cooling Method	Forced air cooling with adjustable air speed	
Warranty	1.5 Years	
COMMUNICATION		
Embedded Interfaces	RS485 / USB / Dry contact	✓
External Modules (Optional)	Wi-Fi / GPRS	✓
CERTIFICATION		
Safety	CE(IEC 62109-1) / CETL(UL 1741/ CSA C22.2 NO.107.1)	
EMC	EN61000, C2	
RoHS	Yes	