

Off Grid Solar Inverter

High Frequency **SX-SEI-6K-SP SERIES**



- **6KW**
- **220V**
- **48V**

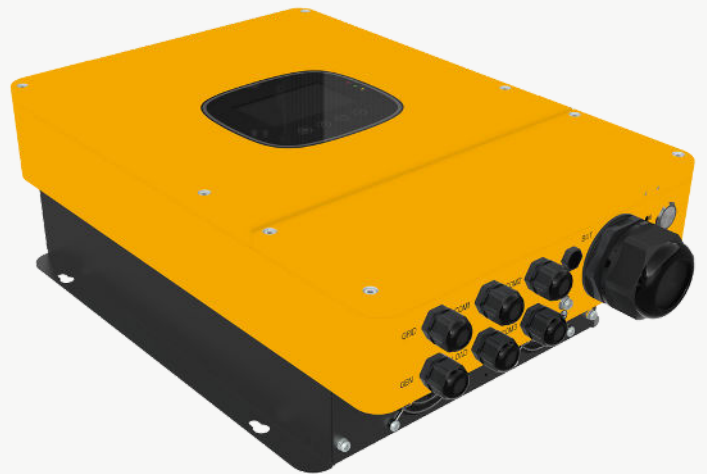
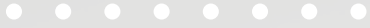
SX-SEI-6K-SP Series is a combination of high frequency inverter, AC charger and MPPT solar controller

Features :

- Advanced MPPT with up to 99.9% efficiency
- Up to 16A*2 PV input current
- 360 degrees of security from hardware to software
- Grid-connected certified
- Maximum PV charging current up to 100A
- Supports Li-ion battery BMS communication
- Outputs high-quality pure sine wave AC power
- Reliable output for long periods at rated power
- Industrial design with a modern aesthetic look
- Easy to install and simple to use
- Exclusive Li-ion battery BMS dual activation
- Time-slot function to save cost with peak-valley



More Image



Application

Designed for Areas with:

Unstable grid power, need backup power .

Main concern is sustainable power supply .

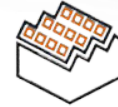


Ground-mounted solar power system

Designed for Areas with :

Stable grid power, but electricity price is expensive .

Main concern is reducing electricity bills.



Rooftop system on residential buildings

OFF-GRID Solar System



Monitor Display



Phone APP



State Grid
AC IN

Solar panel
PV IN



4G/Wifi dongle



Generator
Auto-start signal

Dry Contact

OFF-GRID Inverter Charger



Breaker

AC



Combiner Box

DC



House Distribution Box



Load



Battery

Data sheet

MODEL	SEI-6K-SP	Can Be Set
OFF-GRID OUTPUT		
Rated Output Power	6,000W	
Peak Power	12,000VA	
Rated Output Voltage	230Vac (200/208/220/240Vac Settable)	✓
Load Capacity of Motors	4HP	
Output Frequency Range	50Hz ± 0.3Hz/60Hz ± 0.3Hz	✓
Switching Time	10ms (typical value)	
ON-GRID OUTPUT		
Rated Output Power	6,000W	
Max. Apparent Power	6,000VA	
Max. Output Current	26A	
THDI	< 3%	
Power Factor	0.8 leading to 0.8 lagging	
Rated Voltage	230Vac	
Frequency	50Hz/60Hz	
BATTERY		
Battery Type	Lead-acid / Li-ion / User-defined	✓
Rated Battery Voltage	48V (minimum start-up voltage 44V)	
Battery Voltage Range	40~60Vdc	✓
Max. PV Charging Current	100A	✓
Max. Utility/Generator Charging Current	60A	✓
PV INPUT		
Num. of MPPT	2	
Max. Input Power	4,500W+4,500W	
Max. Input Current	16A*2	
Max. Open-circuit Voltage	500Vdc/500Vdc	
MPPT Operating Voltage Range	120~450Vdc/120~450Vdc	
UTILITY / GENERATOR INPUT		
Input Voltage Range	UPS mode: 170~280Vac; APL mode: 90~280Vac	✓
Input Frequency Range	50/60Hz	
Bypass Overload Current	40A	
EFFICIENCY		
MPPT Tracking Efficiency	99.9%	
Max. Efficiency of Utility Charging	92%	
GENERAL		
Num. of Parallel	1~6 units	
Dimension	556*345*182mm (1.82*1.13*0.60ft)	
Weight	20.8kg (45.86lb)	
Protection Degree	IP65	
Operating Temperature Range	-25~60°C (>45°C derating)	
Humidity Range	0% ~ 100%	
Noise	≤60dB	
Cooling Method	forced air cooling with adjustable air speed	
Warranty	5 years	
COMMUNICATION		
Internal Interface	RS485 / CAN / USB / Dry contact	✓
External Module (optional)	Wi-Fi / GPRS	✓
CERTIFICATION		
Safety	CE(IEC 62109-1/2)、CEI0-21、VDE-AR-N-4105、EN50549-1	
EMC	EN61000、FCC-SODC	