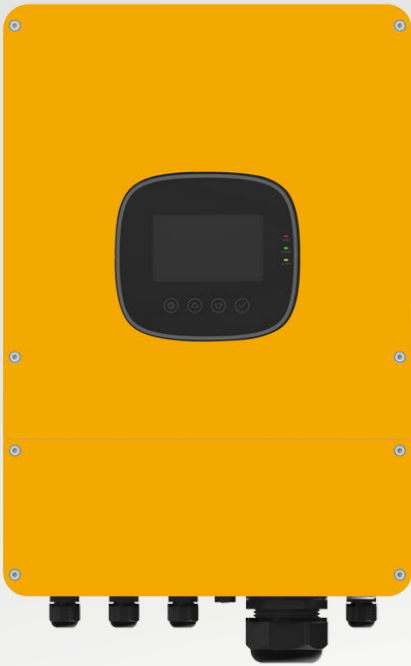


# Off Grid Solar Inverter

## High Frequency **SX-SEI-SP SERIES**



- **8.8KW/10KW/12KW**
- **220V**
- **48V**

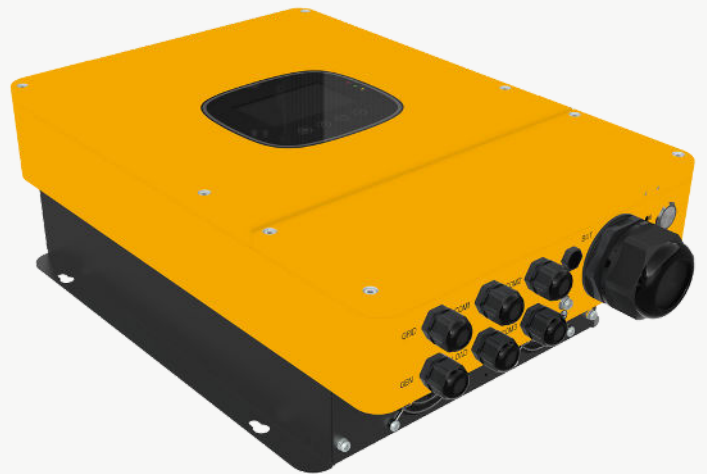
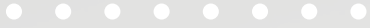
SX-SEI-SP Series is a combination of high frequency inverter, AC charger and MPPT solar controller

### Features :

- Advanced MPPT with up to 99.9% efficiency
- Up to 22A\*2 PV input current
- With software and hardware security protection
- Multiple safety approvals
- Up to 200A charging current
- Supports Li-ion battery BMS communication
- Output high-quality pure sine wave AC power
- With IP65 protection degree
- Industrial design with a modern aesthetic look
- Easy to install and simple to use
- Exclusive Li-ion battery BMS dual activation
- Time-slot function to save cost with peak-valley



# More Image



# Application

## Designed for Areas with:

Unstable grid power, need backup power .

**Main concern is sustainable power supply .**



Ground-mounted solar power system

## Designed for Areas with :

Stable grid power, but electricity price is expensive .

**Main concern is reducing electricity bills.**



Rooftop system on residential buildings

## OFF-GRID Solar System



Monitor Display



Phone APP

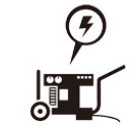


State Grid  
AC IN

Solar panel  
PV IN



4G/Wifi dongle



Generator  
Auto-start signal

Dry Contact

OFF-GRID Inverter Charger



Breaker



Combiner Box

AC

DC



House Distribution Box

AC

AC



Load

DC



Battery

# Data sheet

MODEL	SEI-8K-SP	SEI-10K-SP	SEI-12K-SP	Can Be Set
<b>INVERTER OUTPUT</b>				
Rated Output Power	8,800W	10,000W	12,000W	
Max.Peak Power	17,600VA	20,000VA	24,000VA	
Rated Output Voltage	230Vac single-phase / three-phase (parallel)			√
Load Capacity of Motors	5HP	6HP		
Output Frequency	50/60Hz			
Number of Parallel	1~6 units			
<b>AC OUTPUT (Grid)</b>				
Rated Output Power	8,800W	10,000W	12,000W	
Max. Apparent Power	8,800VA	10,000VA	12,000VA	
Max. Output Current	40A	43.5A	54.5A	
Rated Output Voltage	230Vac			
THDI	< 3%			
Power Factor	0.8 leading to 0.8 lagging			
Frequency	50/60HZ			
<b>BATTERY</b>				
Battery Type	Lead-acid / Li-ion / User Defined			√
Rated Battery Voltage	48V			
Battery Voltage Range	40~60Vdc			
Max. Generator Charging Current	60A			
Max. Grid Charging Current	120A			
Max.PV Charging Current	200A			√
Max.Hybrid Charging Current	200A			√
<b>PV INPUT</b>				
Num. of MPPT Trackers	2			
Max.PV Array Power	5,500W+5,500W	6,600W+6,600W		
Max. Input Current	22A+22A			
Max.Voltage of Open Circuit	500Vdc+500Vdc			
MPPT Voltage Range	125~425Vdc			
<b>MAINS/GENERATOR INPUT</b>				
Input Voltage Range	90~280Vac			√
Frequency Range	50/60Hz			
Bypass Overload Current	63A			
<b>EFFICIENCY</b>				
MPPT Tracking Efficiency	99.9%			
Max. Efficiency	97.5%			
European Efficiency	97%			
<b>GENERAL</b>				
Dimensions	670*440*240mm			
Weight	37kg			
Protection Degree	IP65			
Operating Temperature Range	-25~60°C,>45°C derated			
Humidity range	0~100%			
Cooling Method	Forced air cooling			
<b>COMMUNICATION</b>				
Embedded Interfaces	RS485/CAN/USB/Dry contact			√
External Modules (Optional)	Wi-Fi / GPRS			√
<b>CERTIFICATION</b>				
Safety	IEC62109-1, IEC62109-2			
EMC	EN61000-6-1, EN61000-6-3, FCC 15 class B			
Rohs	Yes			