

Off Grid Solar Inverter

High Frequency **SX-SEI-UP SERIES**

- **8.8KW/10KW/12KW**
- **110V OR 110V/220V split-phase**
- **48V**



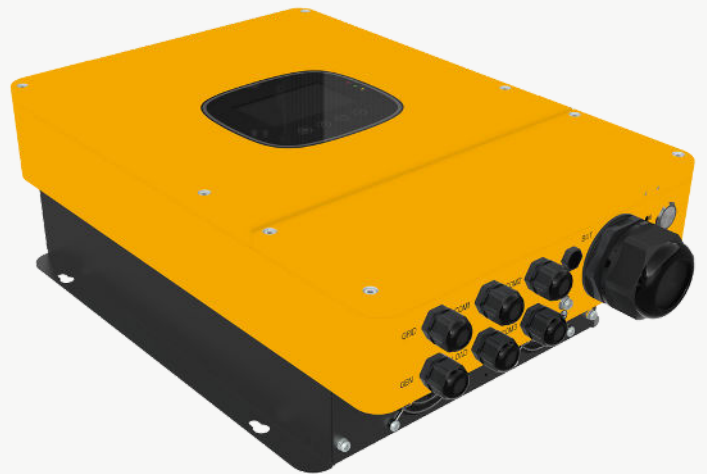
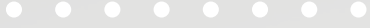
SX-SEI-UP Series is a combination of high frequency inverter, AC charger and MPPT solar controller

Features :

- Advanced MPPT with up to 99.9% efficiency
- Up to 22A*2 PV input current
- With software and hardware security protection
- Multiple safety approvals
- Up to 200A charging current
- Supports Li-ion battery BMS communication
- Output high-quality pure sine wave AC power
- With IP65 protection degree
- Industrial design with a modern aesthetic look
- Easy to install and simple to use
- Exclusive Li-ion battery BMS dual activation
- Time-slot function to save cost with peak-valley



More Image



Application

Designed for Areas with:

Unstable grid power, need backup power .

Main concern is sustainable power supply .



Ground-mounted solar power system

Designed for Areas with :

Stable grid power, but electricity price is expensive .

Main concern is reducing electricity bills.



Rooftop system on residential buildings

OFF-GRID Solar System



Monitor Display



Phone APP



State Grid
AC IN

Solar panel
PV IN



4G/Wifi dongle



Generator
Auto-start signal

OFF-GRID Inverter Charger



Breaker



Combiner Box

AC

DC

Dry Contact

AC

DC

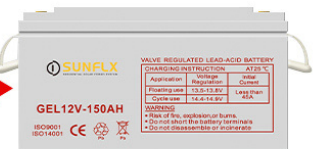


House Distribution Box

AC



Load



Battery

Data sheet

MODEL	SEI-8K-UP	SEI-10K-UP	SEI-12K-UP	Can Be Set
INVERTER OUTPUT				
Rated Output Power	8,800W	10,000W	12,000W	
Max. Peak Power	17,600VA	20,000VA	24,000VA	
Rated Output Voltage	120/240Vac, single-phase / split-phase / three-phase(parallel)			√
Load Capacity of Motors	5HP	6HP		
Rated AC Frequency	50/60Hz			
BATTERY				
Battery Type	Lead-acid / Li-ion / User-defined			√
Rated Battery Voltage	48V			
Max. PV Charging Current	200A			√
Max. Mains Charging Current	120A			√
Max. Alternator Charging Current	60A			
Max. Hybrid Charging Current	200A			√
PV INPUT				
Num. of MPPT	2			
Max. PV Array Power	5,500W+5,500W		6,600W+6,600W	
Max. Input Current	22A+22A			
Max. Open-circuit Voltage	500Vdc+500Vdc			
MPPT Operating Voltage Range	125~425Vdc			
MAINS / GENERATOR INPUT				
Input Voltage Range	90~140Vac			√
Frequency Range	50/60Hz			
GENERAL				
Num. of Parallel	1~6 units			
Dimensions	750*440*240mm (2.46*1.44*0.79ft)			
Weight	42kg (92.59lb)			
Protection Degree	IP65			
Operating Temperature Range	-25-60°C, >45°C derated			
Cooling Method	Intelligent air-cooling			
Warranty	5 years			
COMMUNICATION				
Embedded Interfaces	RS485 / CAN / USB / Dry contact			√
External Modules (optional)	Wi-Fi / GPRS			√
CERTIFICATION				
Safety	IEC62109-1, IEC62109-2			
Rohs	Yes			