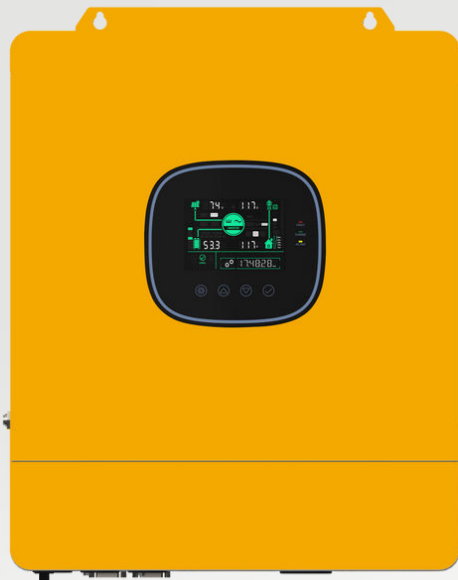


# Off Grid Solar Inverter

## High Frequency **SX-SYP-5K-S SERIES**



- **5KW**
- **220V**
- **48V**

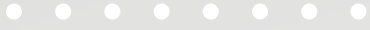
SX-SYP-5K-S Series is a combination of high frequency inverter, AC charger and MPPT solar controller

### Features :

- Advanced MPPT technology with up to 99.9% efficiency
- Up to 22A PV input current for high power PV module
- 360 degrees of security from hardware to software
- IEC safety approvals
- Up to 100A hybrid charging current
- Outputs high quality pure sine wave AC power
- Up to 6 units in parallel connection
- Industrial design with a modern aesthetic look
- Easy to install and simple to use
- Exclusive Li-ion battery BMS dual activation
- Time-slot function to save cost with peak-valley



# More Image



# Application

## Designed for Areas with:

Unstable grid power, need backup power .

**Main concern is sustainable power supply .**

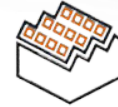


Ground-mounted solar power system

## Designed for Areas with :

Stable grid power, but electricity price is expensive .

**Main concern is reducing electricity bills.**



Rooftop system on residential buildings

## OFF-GRID Solar System



Monitor Display



Phone APP

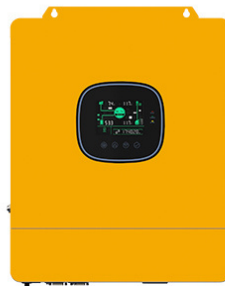


4G/Wifi dongle



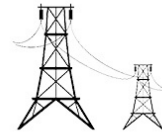
Generator Auto-start signal

OFF-GRID Inverter Charger



Dry Contact

State Grid AC IN



Breaker

AC

Solar panel PV IN



Combiner Box

DC



House Distribution Box



Load



Battery

AC

AC

DC

# Data sheet

MODEL	SYP 5K-S	CAN BE SET
<b>INVERTER OUTPUT</b>		
Rated Output Power	5,000W	
Max.Peak Power	10,000VA	
Rated Output Voltage	230Vac (L/N/PE single-phase)	✓
Load Capacity of Motors	4HP	
Rated AC Frequency	50/60Hz	✓
Waveform	Pure sine wave	
Switch Time	10ms (typical)	
Parallel Capacity	1-6 units (single/three phase)	
<b>BATTERY</b>		
Battery Type	Li-ion / Lead-acid / User-define	✓
Rated Battery Voltage	48Vdc	
Voltage Range	40~60Vdc	✓
Max.MPPT Charging Current	100A	✓
Max.Mains/Generator Charging Current	60A	✓
Max.Hybrid Charging Current	100A	✓
<b>PV INPUT</b>		
Num. of MPPT	1	
Max.PV array power	5,500W	
Max.input current	22A	
Max.Voltage of Open Circuit	500Vdc	
MPPT Voltage Range	120~450Vdc	
<b>MAINS / GENERATOR INPUT</b>		
Input Voltage Range	90~280Vac	✓
Frequency Range	50/60Hz	
Bypass Overload Current	40A	
<b>EFFICIENCY</b>		
MPPT Tracking Efficiency	99.9%	
Max. Battery Inverter Efficiency	92%	
<b>GENERAL</b>		
Dimensions	446.9*350*133mm (1.47*1.15*0.44ft)	
Weight	13kg (28.66lb)	
Protection Degree	IP20, indoor only	
Operating Temperature Range	-10~55°C	
Noise	≤60dB	
Cooling Method	Forced air cooling with adjustable air speed	
Warranty	18 months	
<b>COMMUNICATION</b>		
Embedded Interfaces	RS485 / USB / Dry contact	✓
External Modules (Optional)	Wi-Fi/GPRS	✓
<b>CERTIFICATION</b>		
Safety	CE (IEC62109-1/2)	
EMC	EN61000	
RoHS	Yes	