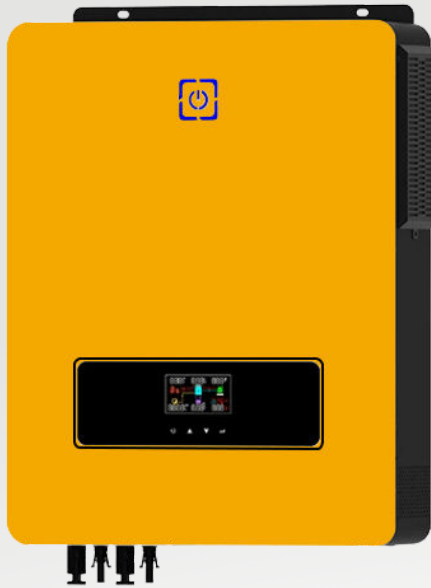


ON/Off Grid Solar Inverter

High Frequency **SX-MPS-V MAX SERIES**



- **7.2KW/8.2KW/10.2KW**
- **110V/220V**
- **48V**

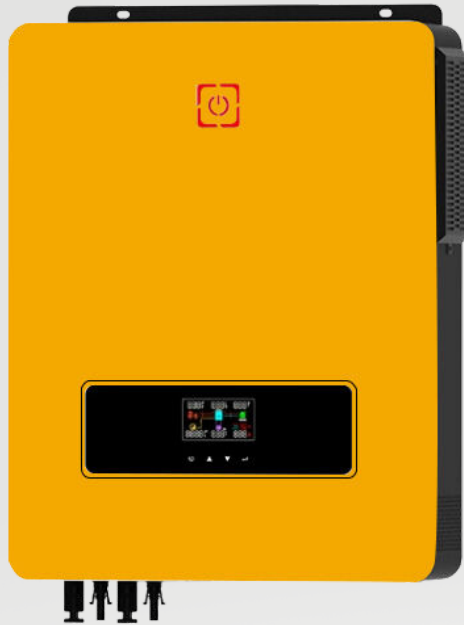
SX-MPS-V MAX Series is a combination of high frequency inverter, AC charger and MPPT solar controller

Features :

- Pure sine wave solar inverter(on/off grid)
- Output power factor 1.0
- WIFI&GPRS available for IOS and Android
- Inverter can run without battery
- One-key restoration to factory Settings
- Built-in Lithium battery automatic activation
- Built-in 160A MPPT solar charger (for 8.2kw,10.2kw),140A(for 7.2kw)
- High PV input voltage range(90~ 500VDC)
- Built-in anti-dust kit for harsh environment
- Smart battery charge design to optimize battery life
- Dual output
- Dual PV input
- Touch button
- On Off Grid Work Mode



More Image



Application

Designed for Areas with:

Unstable grid power, need backup power .

Main concern is sustainable power supply .



Ground-mounted solar power system

Designed for Areas with :

Stable grid power, but electricity price is expensive .

Main concern is reducing electricity bills.



Rooftop system on residential buildings

OFF-GRID Solar System



Monitor Display



Phone APP



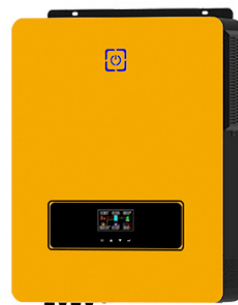
4G/Wifi dongle



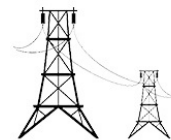
Generator Auto-start signal

Dry Contact

OFF-GRID Inverter Charger



State Grid
AC IN



Breaker

AC

Solar panel
PV IN



Combiner Box

DC

DC



Battery



House Distribution Box



Load

AC

AC

Data sheet

MODEL	MPS-V MAX 7.2KW	MPS-V MAX 8.2KW	MPS-V MAX 10.2KW
Phase	1-phase		
Maximum PV Input Power	8200W	8200W	10200W
Rated Output Power	7200W/7200VA	8200W/8200VA	10200W/10200VA
Maximum Solar Charging Current	140A	160A	160A
GRID-TIE OPERATION			
PV Input(DC)			
Nominal DC Voltage/Maximum DC Voltage	360VDC/500VDC		
Start-up Voltage/Initial Feeding Voltage	90VDC/120VDC		
MPPT Voltage Range	90VDC~450VDC		
Number Of MPPT Trachers/Maximum Input Current	1/27A		
GRID OUTPUT(AC)			
Nominal Output Voltage	200/230/240VAC		
Output Voltage Range	195.5~253VAC		
Nominal Output Current	31.3A	35.6A	44.3A
Power Factor	>0.99		
Feed-in Grid Frequency Range	49~51±1Hz		
EFFICIENCY			
Maximum Conversion Efficiency(DC/AC)	98%		
TWO LOAD OUTPUT POWER(V2.0)			
Full Load	7200W	8200W	10200W
Maximum Main Load	7200W	8200W	10200W
Maximum Second Load(Battery mode)	2400W	2733W	3400W
Main Load Cut Off Voltage	44VDC	44VDC	44VDC
Main Load Return Voltage	52VDC	52VDC	52VDC
OFF-GRID OPERATION			
AC INPUT			
AC Start-up Voltage/Auto Restart Voltage	120-140VAC / 180VAC		
Acceptable Input Voltage Range	90-280VAC or 170-280VAC		
Maximum AC Input Current	40A	40A	50A
Nominal Operating Frequency	50/60Hz		
Surge Power	14400W	16400W	20400W
PV INPUT(DC)			
Maximum DC Voltage	500VDC		
MPPT Voltage Range	90VDC~450VDC		
Number of MPPT Trackers/Maximum Input Current	1/27A		
BATTERY MODE OUTPUT(AC)			
Nominal Output Voltage	220/230/240VAC		
Output Wavefrom	Pure sinewave		
Efficiency(DC to AC)	94%		
BATTERY & CHARGER			
Nominal DC Voltage	48VDC	48VDC	48VDC
Maximum Solar Charging Current	140A	160A	160A
Maximum AC Charging Current	120A	140A	140A
PHYSICAL			
Dimension,D X W X H	537*390*130		
Net Weight(kgs)	14.2	14.2	14.5
Cartoon Dimension,D X W XH(mm)	588*463*205		
Net Weight(kgs)	13.1	14.2	14.5
Gross Weight(kgs)	14.1	15.7	16.0
INTERFACE			
Communication Port	RS232/WIFI/GPRS/LITHIUM BATTERY		